



Jim Trippe, "Landscapes, 03-08"

Jim Trippe, "Landscapes, 03-08"

Selected Paintings & Prints

boathousepress.com
511 Se 5th ave
studio #2118
fort lauderdale, fl. 33301
studio@jimtrippe.com
(917) 544-1971

Jim Trippe, "Landscapes, 03-08"















Tüpp

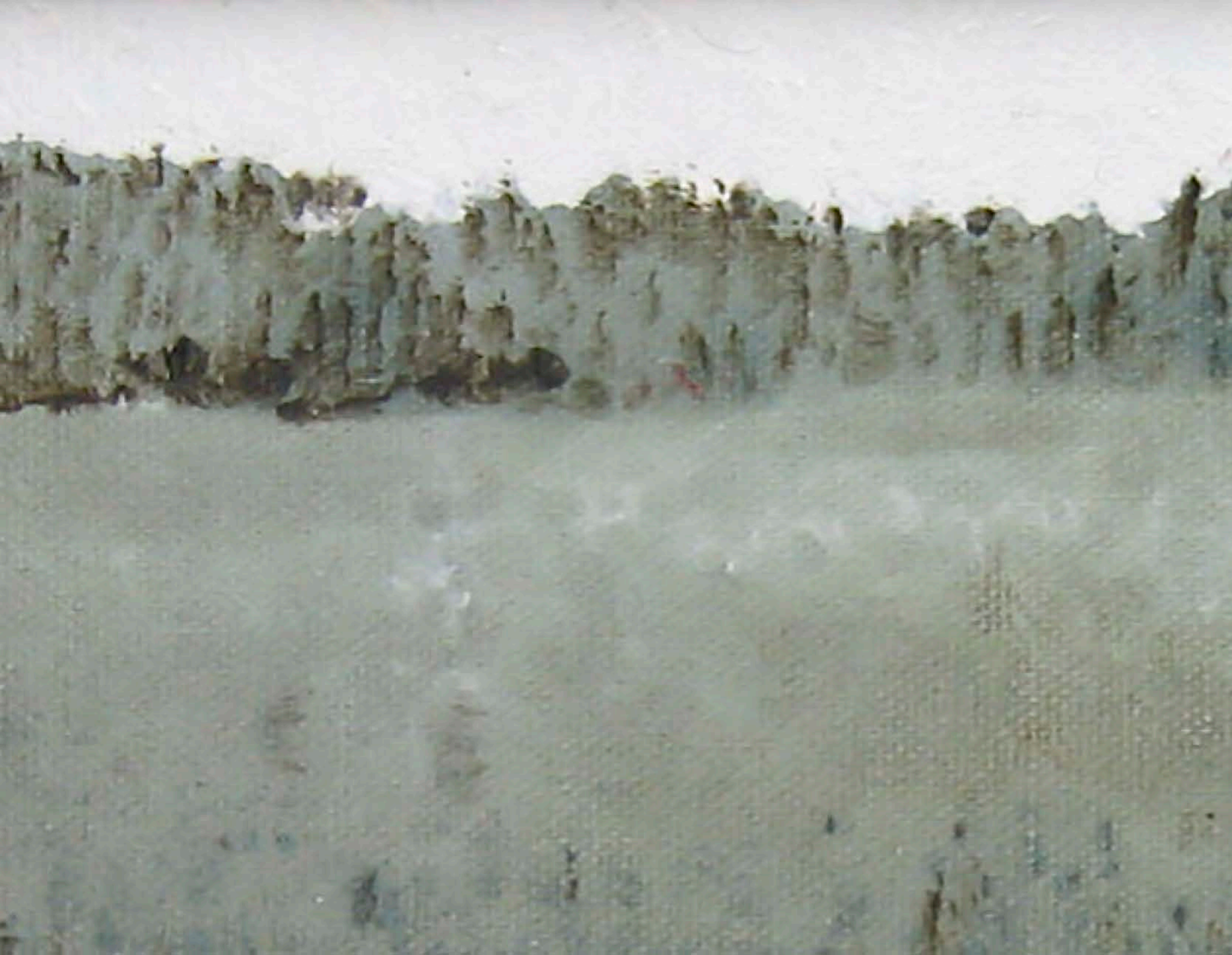






Tripp













11/11





Tripp



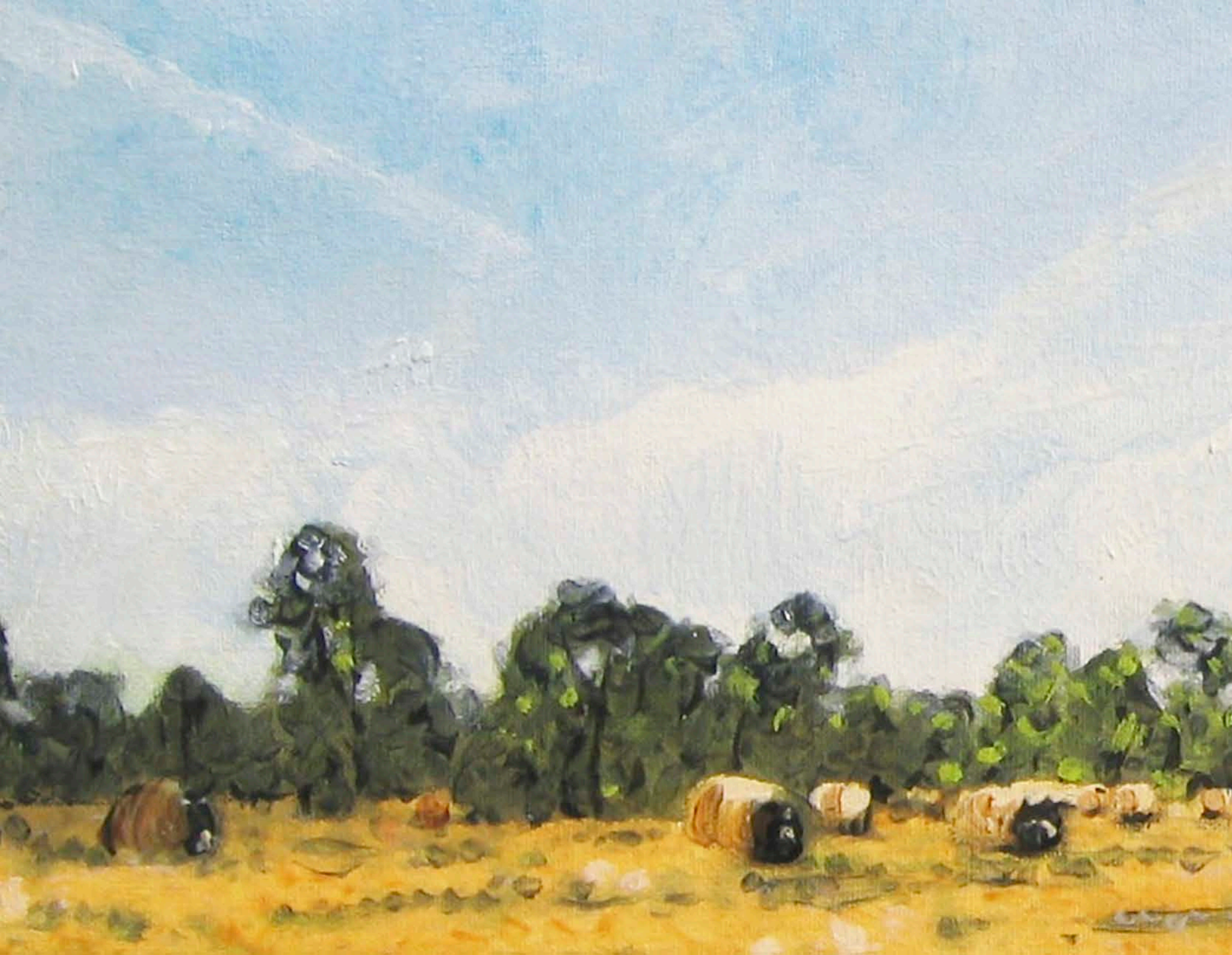






















Shipp







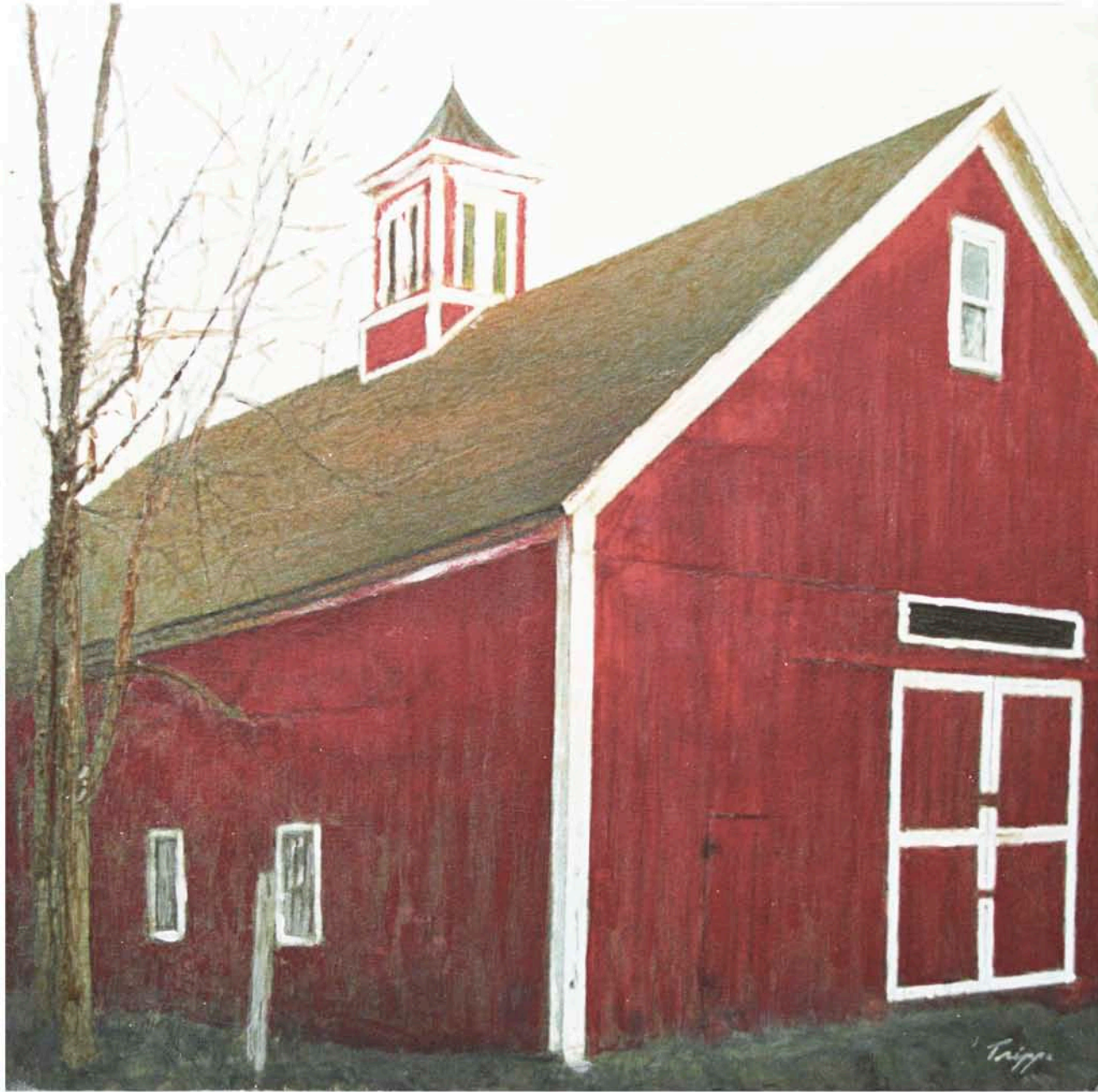






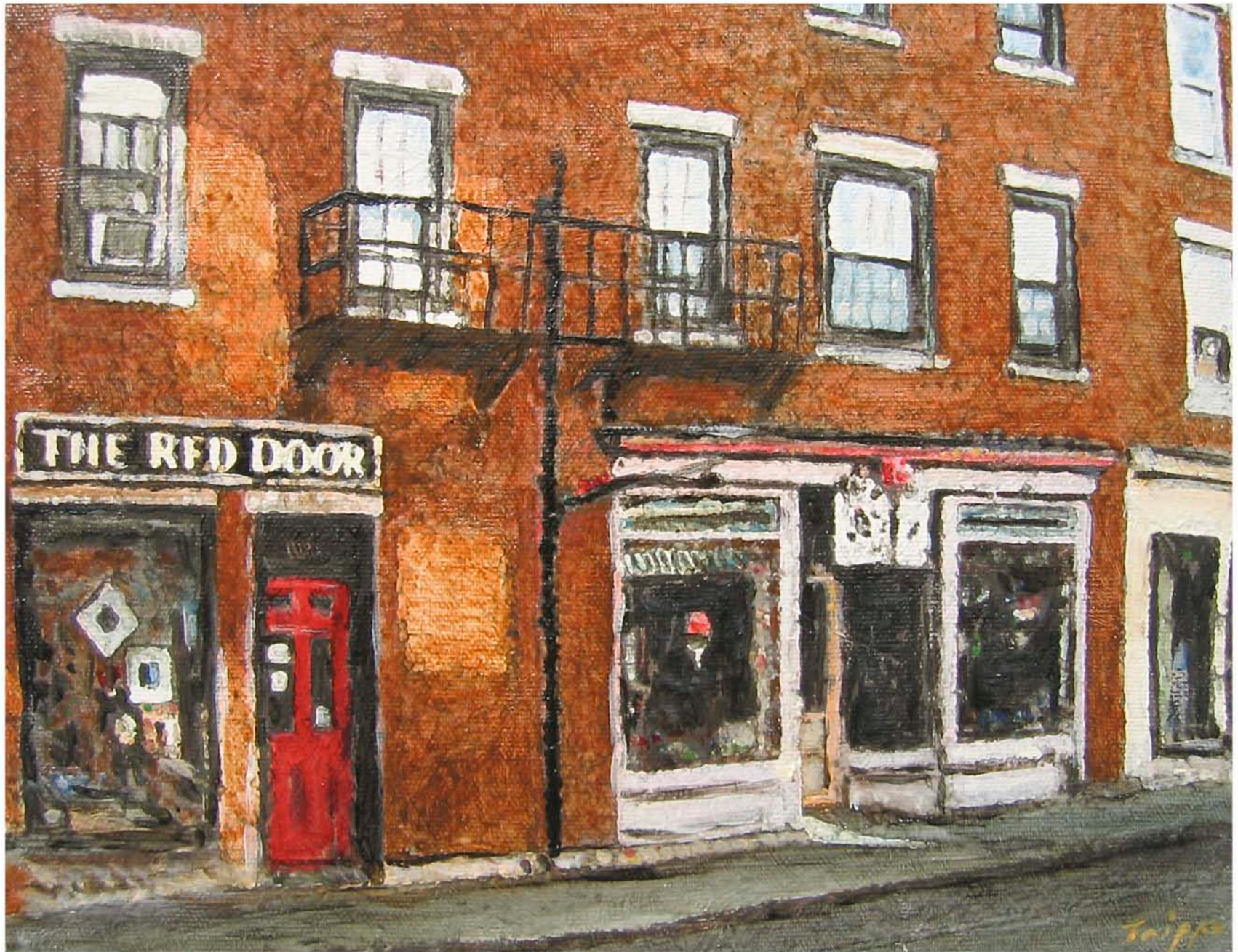








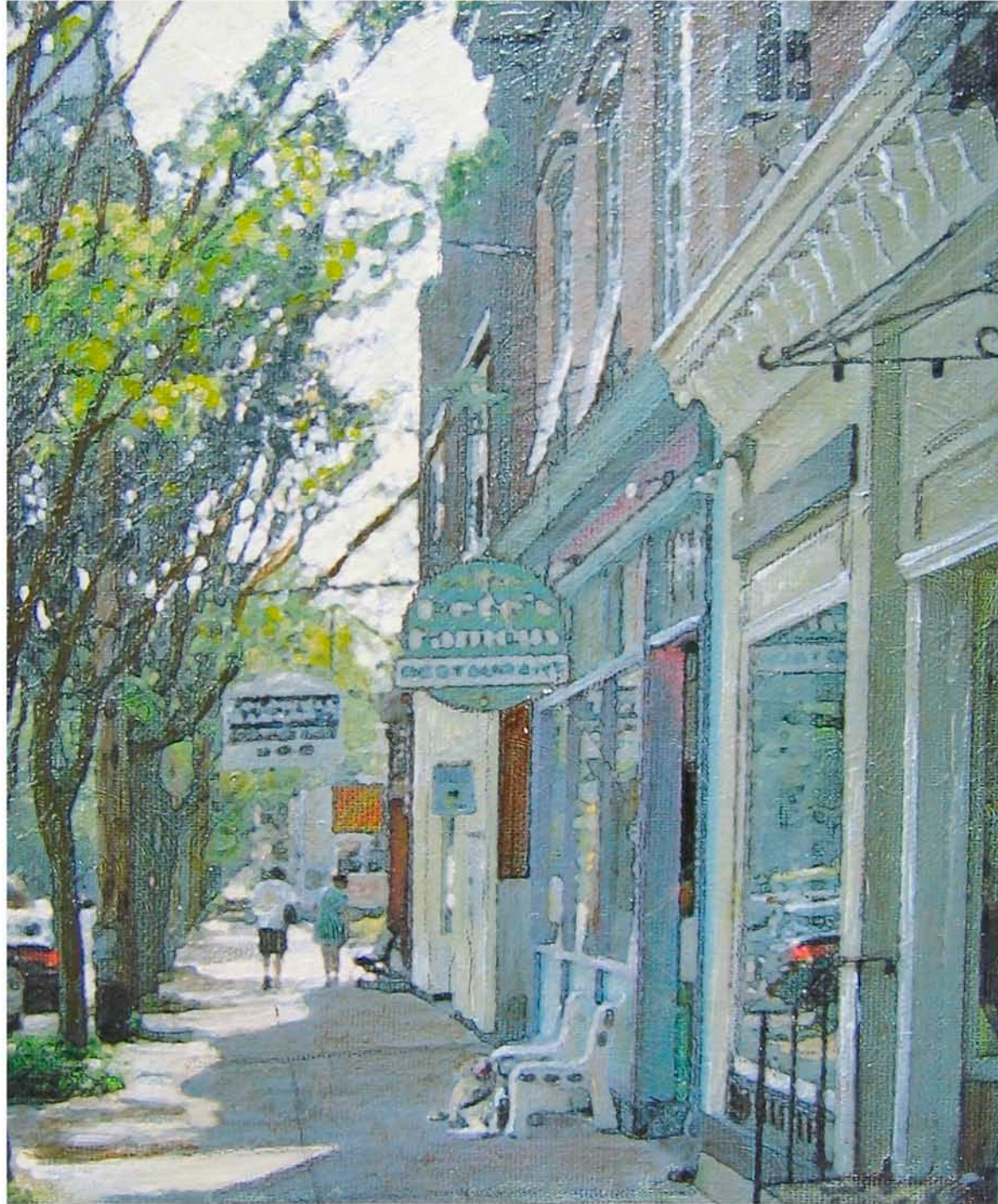






TAVERN

→













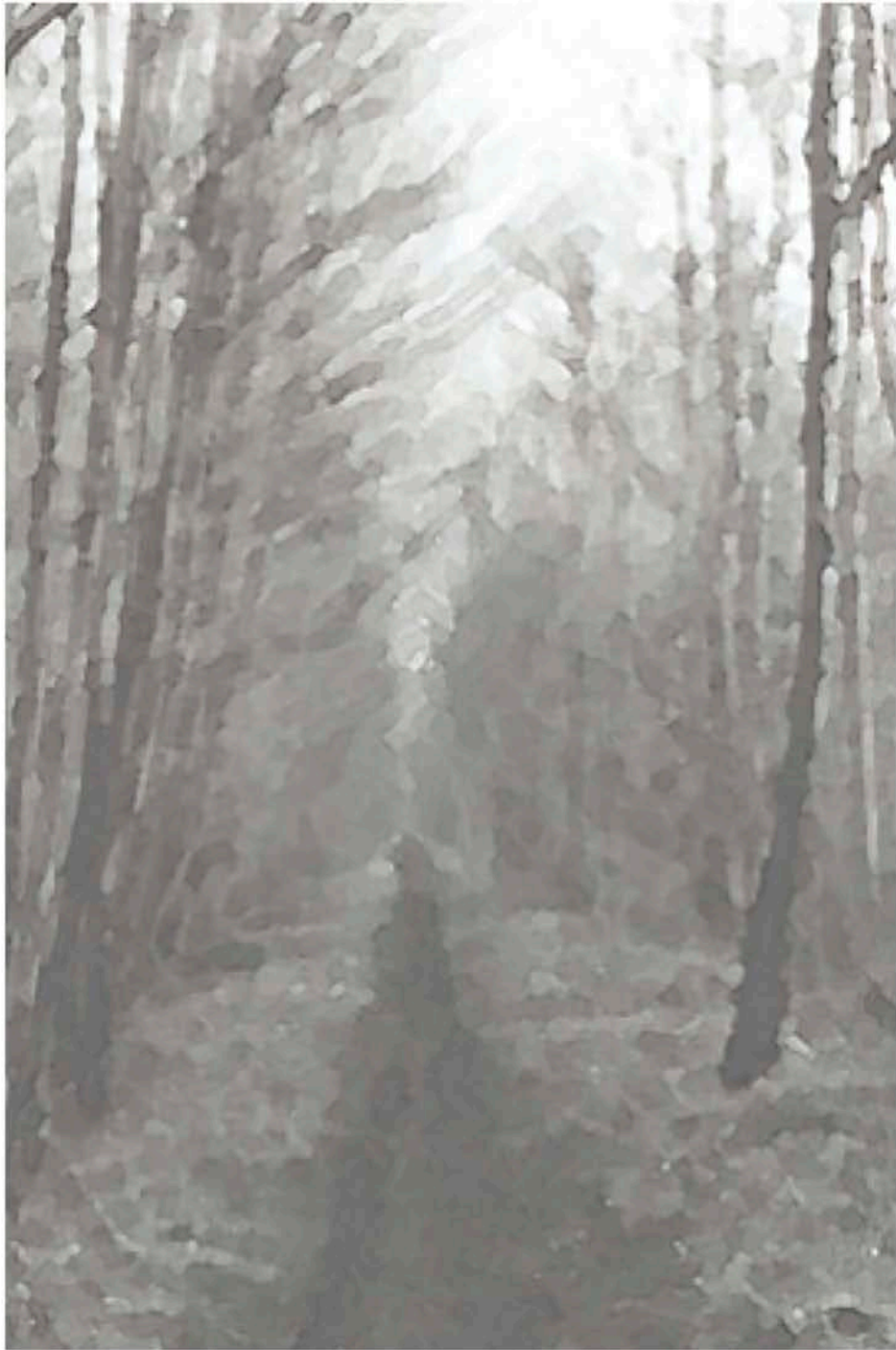


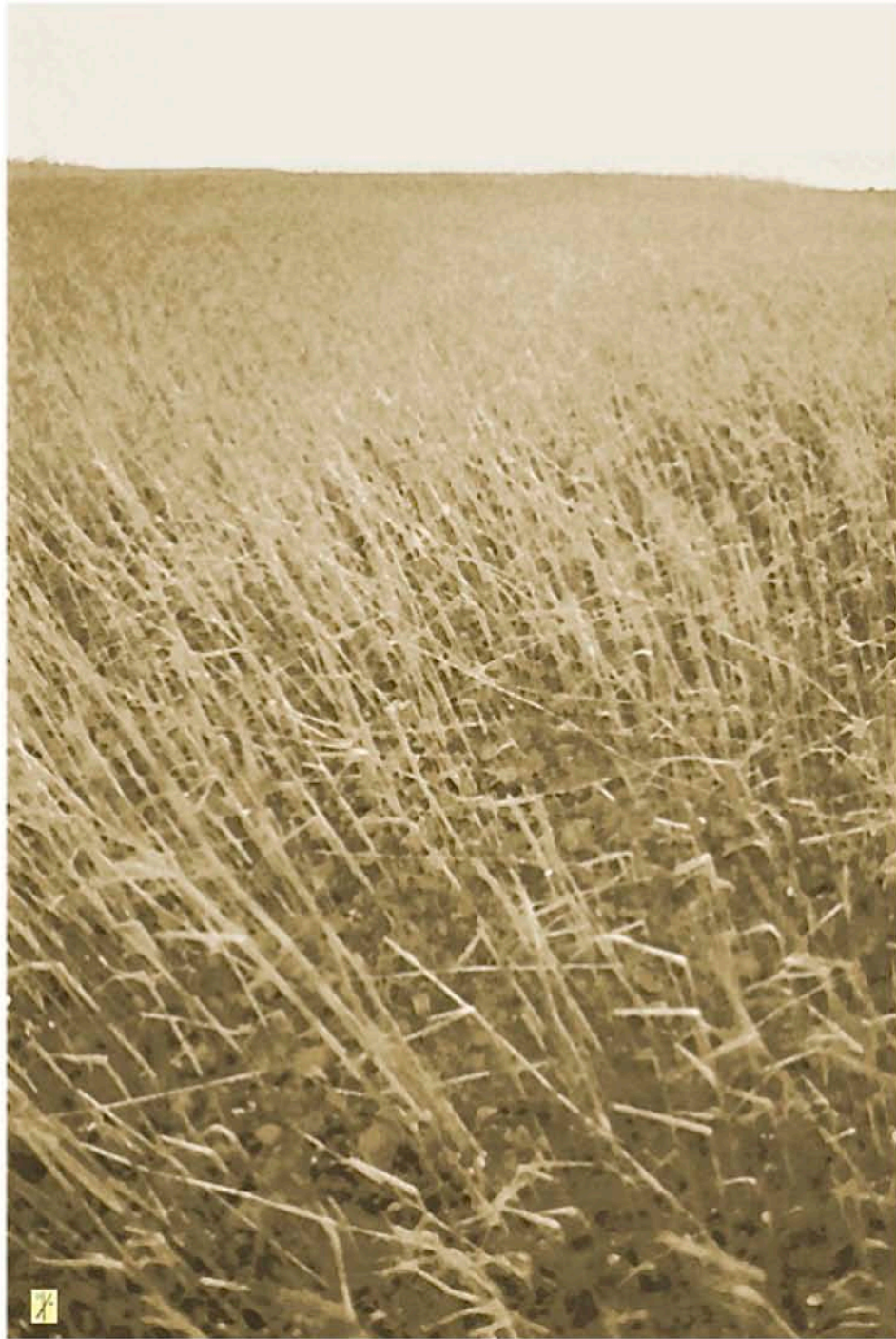






















1/50

"Horse and Rider"

Tippa













1/50

"Meadow Tree"

Tripp







1/50

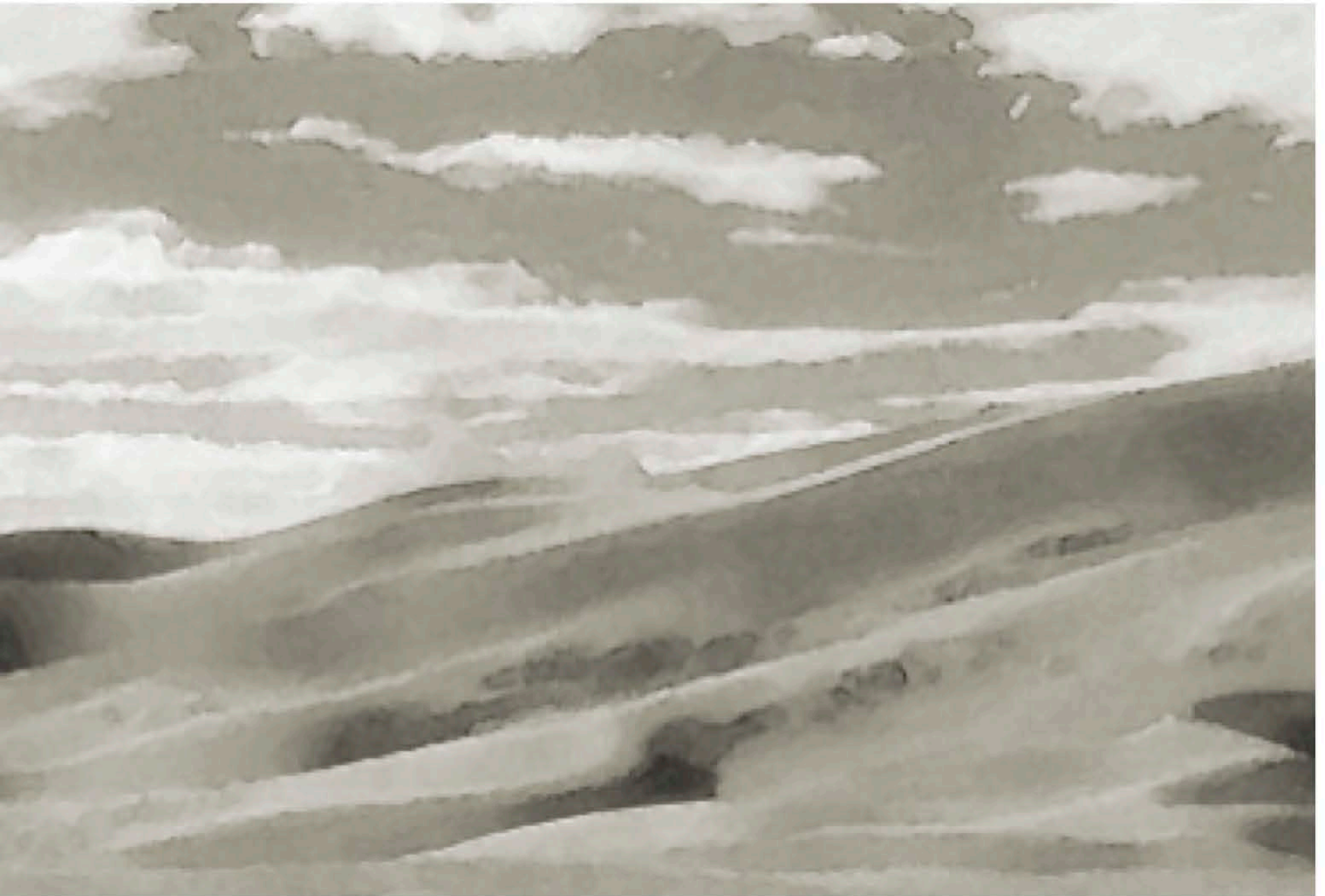
"Storm Clouds"

Thayer

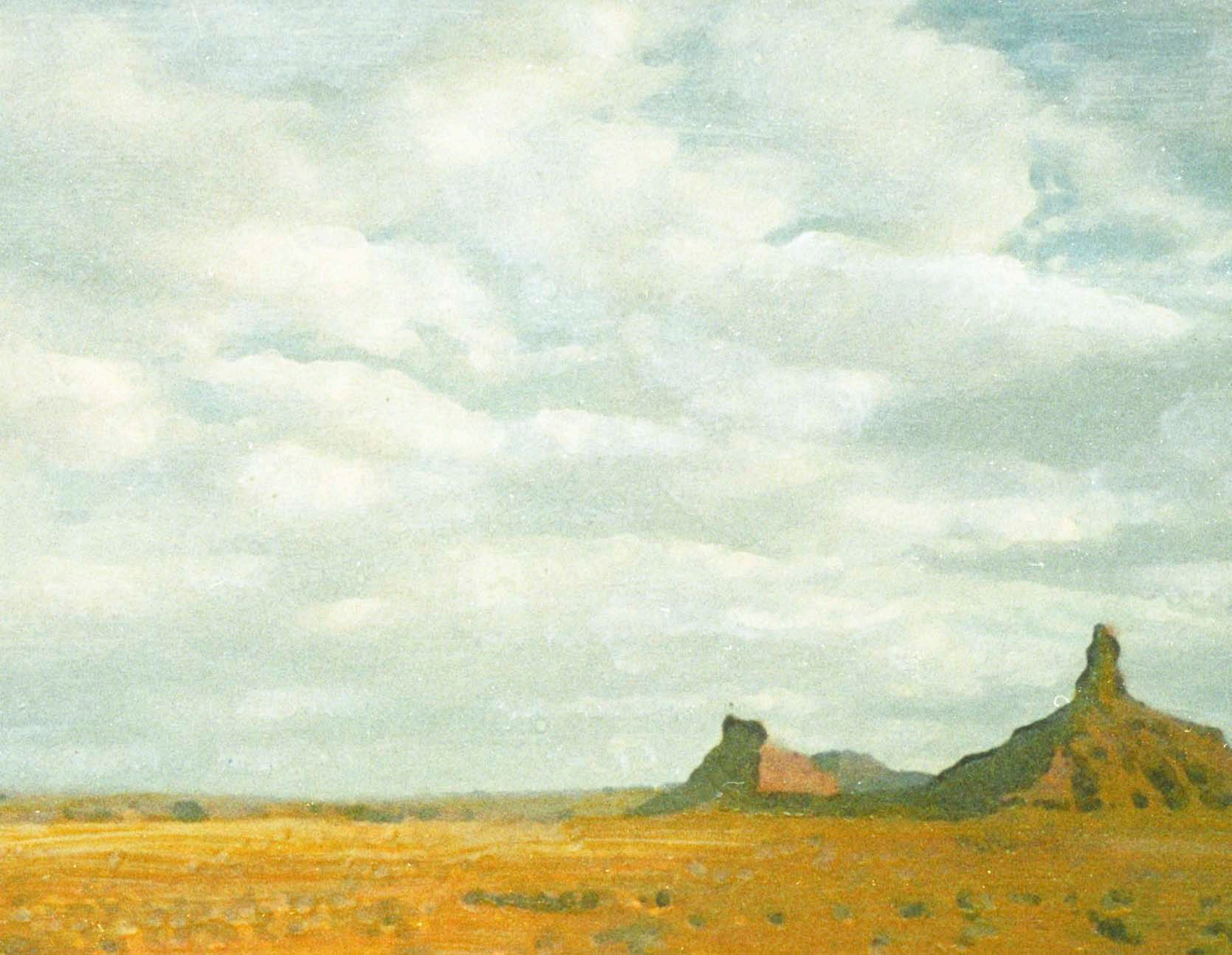














1150

"Valley Creek"

T. Simpson



1150

"Valley Grove"

Thayer











1150

"Badland Plateaux"





1150

"Joshua Tree"

Thayer







1/50

"Badlands Rainbow"

Trapp



















Handwritten text at the top of the page, possibly a title or description.

Small square stamp with a symbol.

Handwritten text at the bottom of the page, possibly a signature or date.



A
N
Z
A
B
O
R
R
C
9
O
D
E
S
E
R
T

C
A
L
I
F
O
R
N
I
A
V
I
S
A
9
4



22

FUJI 35

Thompson

